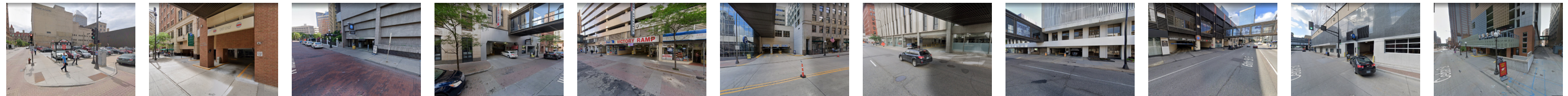
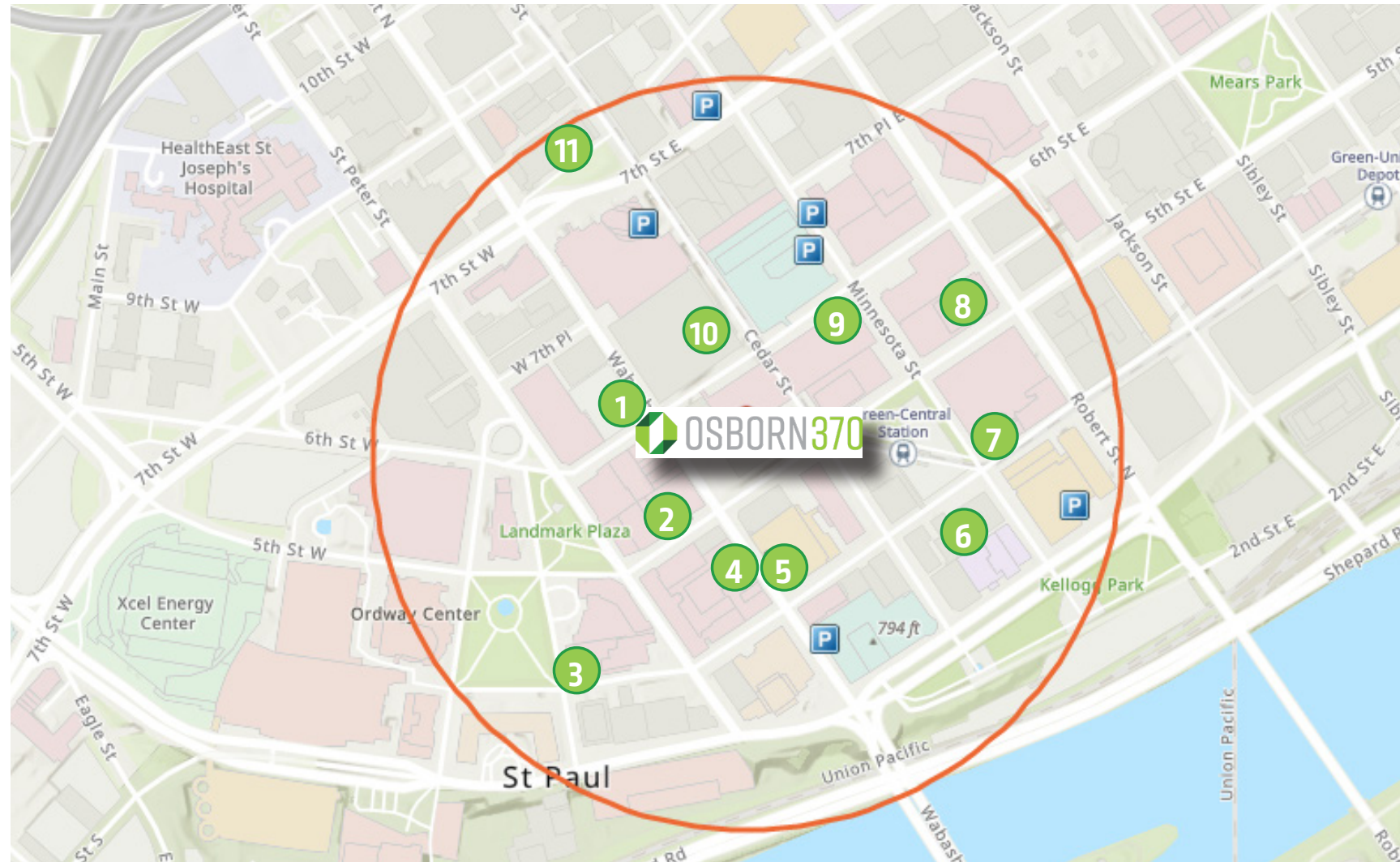




OSBORN370 PARKING OPTIONS



	1	2	3	4	5	6	7	8	9	10	11
--	---	---	---	---	---	---	---	---	---	----	----

Ramp	6th & Wabasha	Lawson Ramp	Landmark Towers Ramp	Lowry Ramp	Victory Parking	Capital City Plaza	First National Bank Building	US Bank Center	Alliance Bank Center	Treasure Island Center Ramp	World Trade Center Ramp
Address	415 Wabasha St N	11 W 5th St	336 Market St	349 Wabasha St N	344 Wabasha St N	50 4th St E	332 Minnesota St	374 N Minnesota St	55 5th St E	411 Cedar St	477 Cedar St
Monthly Contract Rate	\$125-165 plus tax	\$185-\$200 plus tax	\$205 plus tax	\$144 plus tax	\$155-\$170 plus tax	\$142-\$228 plus tax	\$200 plus tax	\$180 plus tax	\$165-\$170 plus tax	\$153-\$181 plus tax	\$165-\$232 plus tax
Operator	Impark	Victory Parking	Allied Parking	Interstate Parking	Victory Parking	Allied Parking	Madison Equities	Madison Equities	Alliance Bank Center	Interstate Parking	Allied Parking
Contact	612.341.8000	651.222.7371	612.293.3924	612.375.1301	651.222.7371	651.291.2831	612.341.0922	612.685.5312	651.293.1874	651.222.4006	651.224.8838

